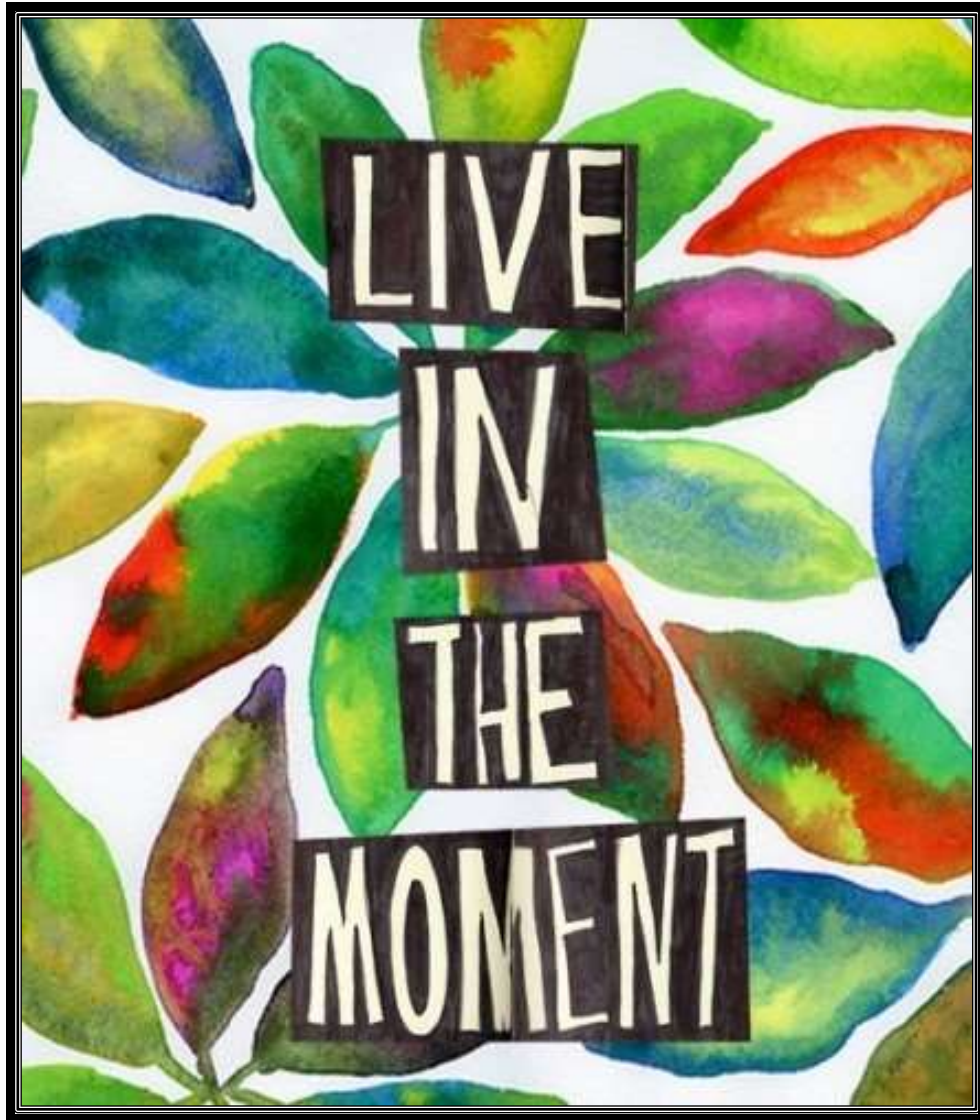


St Elphin's Chronicle



June & July 2018



Vol 130
Price 30p





Warrington Parish Church, St Elphin's Church Services for June 2018

Sunday 3rd June, 1st Sunday after Trinity

8.30am Holy Communion

10.30am All-Age Eucharist

12.30pm Holy Baptism

6.30pm Evensong

Wednesday 6th June

10.00am Holy Communion

Sunday 10th June, 2nd Sunday after Trinity

8.30am Holy Communion

10.30am Sung Eucharist

6.30pm Shared Cluster Service at St Barnabas Church

Wednesday 13th June

10.00am Holy Communion

Sunday 17th June, 3rd Sunday after Trinity / Father's Day

8.30am Holy Communion

11.00am Mayor's Civic Service

6.30pm Holy Communion

Wednesday 20th June

10.00am Holy Communion

Sunday 24th June, John the Baptist

8.30am Holy Communion

10.30am Sung Eucharist

6.30pm Evensong

Wednesday 27th June

10.00am Holy Communion



Warrington Parish Church, St Elphin's Church Services for July 2018

Sunday 1st July, 5th Sunday after Trinity

8.30am Holy Communion

10.30am All-Age Eucharist

12.30pm Holy Baptism

6.30pm Evensong

Wednesday 4th July

10.00am Holy Communion

Sunday 8th July, 6th Sunday after Trinity

8.30am Holy Communion

10.30am Sung Eucharist

6.30pm Evensong

Wednesday 11th

10.00am Holy Communion

Sunday 15th July, 7th Sunday after Trinity

8.30am Holy Communion

10.30am Sung Eucharist

12.30pm Holy Baptism

6.30pm Evensong

Wednesday 18th

10.00am Holy Communion

Sunday 22nd July, Mary Magdalene

8.30am Holy Communion

10.30am Sung Eucharist

6.30pm Evensong

Wednesday 25th July

10.00am Holy Communion

Sunday 29th, 9th Sunday after Trinity

8.30am Holy Communion

10.30am Sung Eucharist

6.30pm Evensong

Worship in the Parish

Sundays:

8.30am Holy Communion

10.30am Parish Eucharist

12.30pm Holy Baptism (1st & 3rd only)

6.30pm Evensong

Wednesdays:

10.00am Holy Communion

Saints' Days and other Holy Days

7.30pm Holy Communion (unless stated otherwise)

Morning and Evening Prayer are said daily in Church at 8.00am and 5.00pm respectively Monday, Tuesday (Evening Prayer only), Wednesday, Thursday and Saturday, (*unless stated otherwise on the weekly notice sheet or in the magazine*).

A Loop System is in operation in the Church to assist hearing aid users. Please switch your hearing aid to the 'T' position for it to be effective.

There are large print copies of the Hymn Book and the Communion Service. Please ask the Church Wardens or Sidespeople if you would like a copy.

Special Services are announced through Church Notices, the Parish Magazine and the Website as necessary.

Holy Communion is taken regularly to the Sick and Housebound by our Clergy and Team of Licensed Eucharistic Ministers. Please inform the Clergy when parishioners are ill, either at home or in hospital.

The Parish Staff

Rector and Area Dean of Warrington	Reverend Canon Paul D Wilson The Rectory 129 Church Street WAI 2TL email: revpdwilson@aol.com	01925-635020
Curate	Reverend Stewart McTaggart stewartmctaggartis@hotmail.com	07540-344870
Readers	Mr R Whitticombe 3 Franklin Close WA5 8QL Mr L Marsh 14 Queens Avenue WAI 3BP	01925-564408
Reader Emeritus	Mr A G Dunn 56 Orford Green WA2 8PL	01925-630417
Church Wardens	Mr A Wright 5 Kinsale Drive Locking Stumps WA3 6LX Miss K J Hayes 8 Charlton Street WA4 1LX	01925-821048 01925-656790
Organist and Choirmaster	Nigel Kirk	

Websites:

St Elphin's: <http://www.warringtonparishchurch.org>

Diocesan Website: <http://www.liverpool.anglican.org>

Cathedral Website: <http://www.liverpoolcathedral.org.uk>



www.facebook.com/warringtonparishchurch

Please do visit and 'Like' our Facebook page so you can keep up to date with events and services in our church and 'share' this with others whom you connect with on social media.

Living in the present...

Just a few weeks ago I put the 2019 diary insert into my paper diary. Such is the pace of church life with the many meetings, events, services, etc, that I'm already beginning to think about and plan for events later this year and putting meetings into my diary for next year. I haven't yet been on my sabbatical from July to September, and already I'm needing to consider meetings and events which will come soon after this, and it feels like my sabbatical is over before it's even begun. In just a few weeks the schools will have finished for another academic year and will be returning again a few weeks later with all of the Governor's meetings and School Assemblies. Then it'll be Harvest, followed by Regimental Sunday, The Festival of Remembrance at the Parr Hall, the annual Memorial Service, the many University and College awards evenings, Remembrance Sunday, Confirmation Service, St Rocco's services, Advent, the many Christmas services for groups and organisations, our own church Christmas services and the New Year...and it's still only June!

Many of us live our lives so much in the future, busying ourselves with planning ahead, that we sometimes forget to live in the present.

As you will already be aware, I'm a great advocate of planning and preparation, as I believe that if something is carefully considered and thought through, then it has a slightly better chance of succeeding, than something which has been 'thrown together' at the last minute.

But sometimes in the middle of all the forward planning, we need to live in the moment and cherish it and relish those spontaneous occasions which can often give a little colour, flavour and texture to our lives.

Jesus was a great forward planner. He knew what would happen to him and his disciples and he planned and prepared both himself, and them, for those things. But he also lived in the moment and cherished them, not wanting to rush onto the next thing to be achieved too soon.

We too, in the hectic, managerial, diary-led world in which we live need to cherish those rare and precious moments and live in the present. We need to enjoy each other and treasure the time we

spend together, because in planning too far ahead, we might miss something special and live to regret it later.

⁶ Do not be anxious about anything, but in every situation, by prayer and petition, with thanksgiving, present your requests to God. ⁷ And the peace of God, which transcends all understanding, will guard your hearts and your minds in Christ Jesus. (Philippians 4:6-8)

With every blessing.

Paul

The Revd Canon Paul Wilson

Rector and Area Dean of Warrington

Warrington Walking Day –Friday 29th June

The Town's Annual Witness of Christian Faith

We meet as usual in the Churchyard of St Elphin's and leave for the Town Hall at 9.25am.

We leave the town hall at 10.25am.

If you are able please join us and support the Walk. There will be a short service afterward in the Churchyard or in the Church if wet.

Volunteers are required to act as stewards with the procession; all churches will provide their own.

This year we will be carrying a smaller banner as due to Building work in Bridge Street, space is limited.

Please speak to the Churchwardens if you are able to act as stewards.

Contributions towards the cost of the band will be appreciated.

St John's Court

The next services of Holy Communion at St John's Court will be on Tuesday 3rd July at 11.30am.

All are welcome.



Quiz Night

In St Elphin's Community Centre

Friday 22nd June 2018

at 8.00pm

Tables of 4



£4.00 each including refreshments

Bring your own drink

Howley Carnival

Saturday 14th July at 2.00pm

To be opened by Mrs Joan Williams

Choir Teacher at St Elphins School

who will crown the Carnival Queens & Prince

Usual Stalls and Entertainment

Pause for Thought...with Norma Fox

*Richer than gold is the love of my Lord,
Better than splendour and wealth.*

Hymn 429

I think it strange that when we've been gardening, something I do with great pleasure, people say that our hands get 'dirty' or 'soiled'. Really they have just been in simple contact with the earth, the tangible source of life.

Reading a book on Asia made me very conscious of the land. So many peasant farmers depend utterly on what it gives. To them the land isn't 'dirt'. An Australian aborigine once said 'The land is our mother... our identity. To us land is a living thing we are part of it and it is part of us'.

Am I making this sound too romantic as I sit here at my dust free desk? But when I think of the exploitation of both the earth and its people there is little place for being romantic. What about the people forced to flee their land, the many who own nothing but the soil under their finger nails?

Jesus was one of those, The pungent stable wasn't his. Even the straw belonged to others. I'm sure the gold the wise men gave him soon ran out when the refugee family moved down to Egypt. The New Testament never describes any possessions of Jesus, except the robe they stripped from him at the cross.

And yet it does, it speaks of richness, the riches of love, human contact, relationships. That richness of human experience is common to us all. I've seen the same joy in the eyes of a young woman looking with wonder and love at her newborn child. I've seen anxiety in the face of relatives as they watch helpless as a loved one dies. Humanity is one, it's hopes and needs the same, and my understanding emphasises our common need for the richness of Christ. It lies, not in the things we have, but in the relationships we share. In the joy of being human. In our experience of love, in the closeness to each other and to God.

God pours his love into our hearts that we may grow and be fruitful and therefore nourish others.



Choose the UK's most
trusted home insurer
and we'll donate

£130

to your church



To celebrate our 130th anniversary, Ecclesiastical is offering to donate £130 to your church for every new home insurance policy taken out.

We're proud that customers across the UK have voted Ecclesiastical as the UK's Most Trusted Home Insurance provider, ahead of all other insurers. To celebrate this achievement, and in recognition of our 130 year anniversary, we'll donate £130 to your church if you take out a new home insurance policy with us. To take advantage of this offer call **0800 783 0130** or visit

www.ecclesiastical.com/Trust130 for more information.

When it feels **irreplaceable**, trust



Terms and conditions: 1. To celebrate our 130 year anniversary we are offering to make a charitable donation of £130 when a new Ecclesiastical Insurance plc Home Insurance policy (a "Policy") is purchased directly from us and your insurance cover commences on or before 31st December 2018, on the following terms and conditions. 2. One charitable donation will be made per Policy issued. 3. Quotation requests for a Policy must be made online or by telephone, quoting TRUST130. This charitable donation offer cannot be redeemed in any other way. 4. Underwriting terms and conditions apply and we reserve the right to not provide a quotation or offer to insure if the property that is the subject of the quotation does not meet our underwriting criteria. 5. The charitable donation is conditional on the named insured under the Policy notifying us of a church in the United Kingdom which is part of the Anglican Communion to receive the donation (the "Nominated Church"). Donations will be made by us directly to the Nominated Church, within 30 days of the Policy start date. 6. "We" and "us" in these terms and conditions refer to Ecclesiastical Insurance Office plc.

For more information about this scheme please speak to one of the churchwardens.

The background of the entire page is a faded, light-colored photograph of Warrington Parish Church. The church is a large, Gothic-style building with a prominent, tall, pointed spire. The sky is a pale blue with some light clouds. The church is situated on a street, with some other buildings and trees visible in the background.

Warrington Parish Church

More than any other building it
reflects the history of the town

The church will be open to visitors from:

2nd May to 29th September 2018

Wednesdays: 2.00pm to 4.00pm

Saturdays: 9.30am to 3.00pm

Group visits by prior arrangement

Guides and Souvenirs available

Contact numbers:

(01925) 656790

(01925) 821048

Come and have a look around



St Elphin's Ladies Group

Future Dates:

June 6th

Meal at Nora Street – names to Margaret asap

June 20th

A talk about the Childrens Adventure Farm Trust

July 4th

To be advised

Saturday July 14th

Howley Carnival – donations of bottles for the Tombola would be gratefully received – please leave at the back of Church

July 18th

Musical Evening in the Community Centre with Bob Birbeck – **please note change of venue**

September 5th

Coffee Afternoon and Bring and Buy in Church

October 3rd

Autumn Fayre Planning Meeting and Pot Luck Supper

October 17th

Crafts with Mara

November 7th

Afternoon Tea in Church to commemorate the end of WWI

November 21st

Visit to Trebaron Garden Centre for Afternoon Tea

December 5th

Christmas Lunch at the Toby Carvery

All Ladies are welcome to join us for any of our meetings at 7.30pm in St Elphins Community Centre.

St Elphin's Toddlers Group

Each Tuesday in term time: 9.30 am – 11.30am

St Elphin's Community Centre, St Katherines Way

For all - from babies to Preschool with their parents, grand-parents or carers



Restarts after half term on 12th June until 24th July, when it breaks for the summer.

Junior Church

Each Sunday except 1st Sunday each month from 10.30am in the choir vestry. Breaks for summer on 22nd July.

During the summer break there will be activities for children at the back of church during the service.

Town Centre Cluster Trip

Early in the morning of May 19th a group of 43 pilgrims set off to visit The Cathedral Church of The Holy and Undivided Trinity, otherwise known as Carlisle Cathedral. Our coach was decidedly “top of the range” and we had a trouble free journey north with fantastic views of the glorious English countryside! After a journey of just over two hours we were dropped off opposite Carlisle Castle and after a walk of about five minutes we arrived at our destination. The Team at the Cathedral gave us a warm welcome and we split into two groups for a guided tour. Wendy and Paul arrived just in time to join us for this having driven from their holiday resort.

The second smallest of England’s ancient cathedrals, Carlisle Cathedral began life in 1122 as an Augustinian Monastic church. It was built on the remains of a previous Norman church. In 1133 the church was raised to Cathedral status. Built of red sandstone it has blackened with age. Over the centuries it has suffered considerable damage from subsidence, invaders from Scotland, the dissolution of the monasteries and the events of the Civil War. The East Window is spectacular, as are the Medieval Choir seats with misericords , but it was the amazing ceiling of the Choir that caught everyone’s attention.....barrel shaped and made of painted wood it is bright blue and covered in gold stars! The High Altar is canopied which is most unusual for an Anglican church.

Just before midday we all met up at the West end of the building in the Chapel of The Duke of Lancaster’s Regiment, formerly The Border Regiment, for a service of Holy Communion. The Canon Warden presided and lessons were read by Rev Karen Timmis (St Barnabas) and Rev Shirley Cowan (Holy Trinity). The Rector assisted with the Chalice.

After the service we all went off to do our own thing, some to the shops, some to the Castle and of course we all wanted to find a place for lunch! I went to a small café opposite the Cathedral and then visited the fantastic book shop and the Tullie Museum before meeting up with everyone at the drop off spot. Just after half past four we set off for home.

As we travelled we had the fun of the raffle, with Royal Wedding themed prizes, and then we all settled down to enjoy the scenic journey. By seven o'clock we were home again tired but happy having enjoyed the fellowship of our time together.

Kathryn



*Photographs courtesy of
Karen Wilson*

A visit to St Luke's Church, Winmarleigh

On a Tuesday in May, Arnold and I paid a visit to the church of St Luke in Winmarleigh.

Winmarleigh is a small village 3 miles from Garstang and mainly consists of farms.



It was formally owned by Colonel John Winmarleigh, (later Lord Winmarleigh), a resident of Bank Hall until 1872. This was sold to Warrington Borough Council and later became our Town Hall. He moved to his Winmarleigh to escape the increasing smoke and industry of Warrington.

He was an extremely wealthy man and gave generously to many projects in our town including our church of St Elphin where the family had a chapel and vault and where most of his family were laid to rest. Now St Ann's Chapel, there are plaques on the walls commemorating his family and of course his own large tomb.

Once settled on his Winmarleigh estate where he first lived in a former shooting lodge, he began to build there and support his tenants. He began with the School and then Winmarleigh Hall where he eventually lived and which is today a school for outdoor activities for young people.

Then he had the Church built, founded in 1876 and dedicated to St Luke. It is a small but beautiful church of which its members are very proud.

In 2016 they were celebrating 140 years of its foundation and began to delve in its history and the life of the man. This brought a small group to Warrington where they visited the Town Hall and the Church where Arnold and I met them and formed a connection they much appreciated.

We learnt a great deal on our visit about the man and his long life. He was an MP for North Lancashire for 42 years and a colonel in the North Lancs. Militia, the Victorian TA which eventually absorbed in the Duke of Lancashire's Regiment. Our visit coincided with that of a

local Walking group and together we were given a very interesting talk and saw their exhibition of historical items.

We were introduced as members of St Elphin's and given a round of applause, I'm not sure why but it was very nice.

Refreshments of sandwiches, cakes and tea were provided and although the rain stopped us looking round outside it was a very enjoyable visit.

Sadly, Lord Winmarleigh who had 6 children, 2 boys and four girls, was the last of the line as his sons pre-deceased him as did his only grandson aged 22.

It would be good to arrange another visit when more of us were able to go; I know we would be very welcome.

Lord Winmarleigh - 1802-1892

Sylvia Wright



Bring & Buy with Cheese & Wine

Quiz and Raffle

Thursday July 26th at 7.30pm

St Elphins Community Centre

Tickets £4.00 available from Margaret Sefton

Lord we thank you for all that is expressed in practical ways to glorify your name. We pray for all who give so willingly, caring for others and shining the light of Christ in the world. May your Holy Spirit guide renew and strengthen as volunteers faithfully serve your world. Lord, guide each one of us to find our place in joyful service. Teach us to see the wonder of service to others as an expression of your will. May we have the gift of forbearance, together with a lightness of spirit as we answer your call to love our neighbour as ourselves. Volunteering is at the heart of Mothers Union worldwide where, daily, members reach out in diverse and far reaching ways to support their communities. We pray for our local initiatives supporting Baptism, running Junior Church and Toddler Group and supporting older members with friendship and fellowship, as well as supporting other activities within the church.

June

Wednesday 13th June – Meal out at Barn Owl in Lymm. Deposits £5 and details of meal to Wendy Bailey as soon as possible please

July

Wednesday 11th July 11.00am, Cinnamon Brow – Drop in Fundraiser – please see Wendy if lift required

Thursday 12th July 7.30pm, Christ Church Padgate – Deanery Festival & Social – Please see Wendy for lifts

Forward Look - Diocesan Events

Tuesday 6th Nov – Cathedral Day 10.30am

Thursday 6th Dec – Diocesan Carol Service St Paul's Fazakerley

Baptisms

3rd June Volunteers required

1st July Volunteers required

15th July Wendy & Barbara

Tea / Coffee

June

3 rd June	Julie & Elle
10 th June	David & Kerrie
17 th June	Julie & Linda
24 th June	Julie & Elle

July

1 st July	Julie & Elle
8 th July	Julie & Linda
15 th July	Volunteers required
22 nd July	David & Kerrie
29 th July	Julie & Linda

Afternoon Tea



Venue – St Elphin’s Church Date – Saturday 16th June

Time - 1.30pm to 3.30pm. Cost £2.50. All welcome

A Prayer for our Earth

All powerful God, you are present in the whole universe and in the smallest of your creatures.

You embrace with your tenderness all that exists.

Pour out upon us the power of your love, that we may protect life and beauty.

Fill us with peace, that we may live as brothers and sisters, harming no one.

O God of the poor, help us to rescue the abandoned and forgotten of this earth, so precious in your eyes.

Bring healing to our lives, that we may protect the world and not prey on it, that we may sow beauty, not pollution and destruction.

Touch the hearts of those who look only for gain at the expense of the poor and the earth.

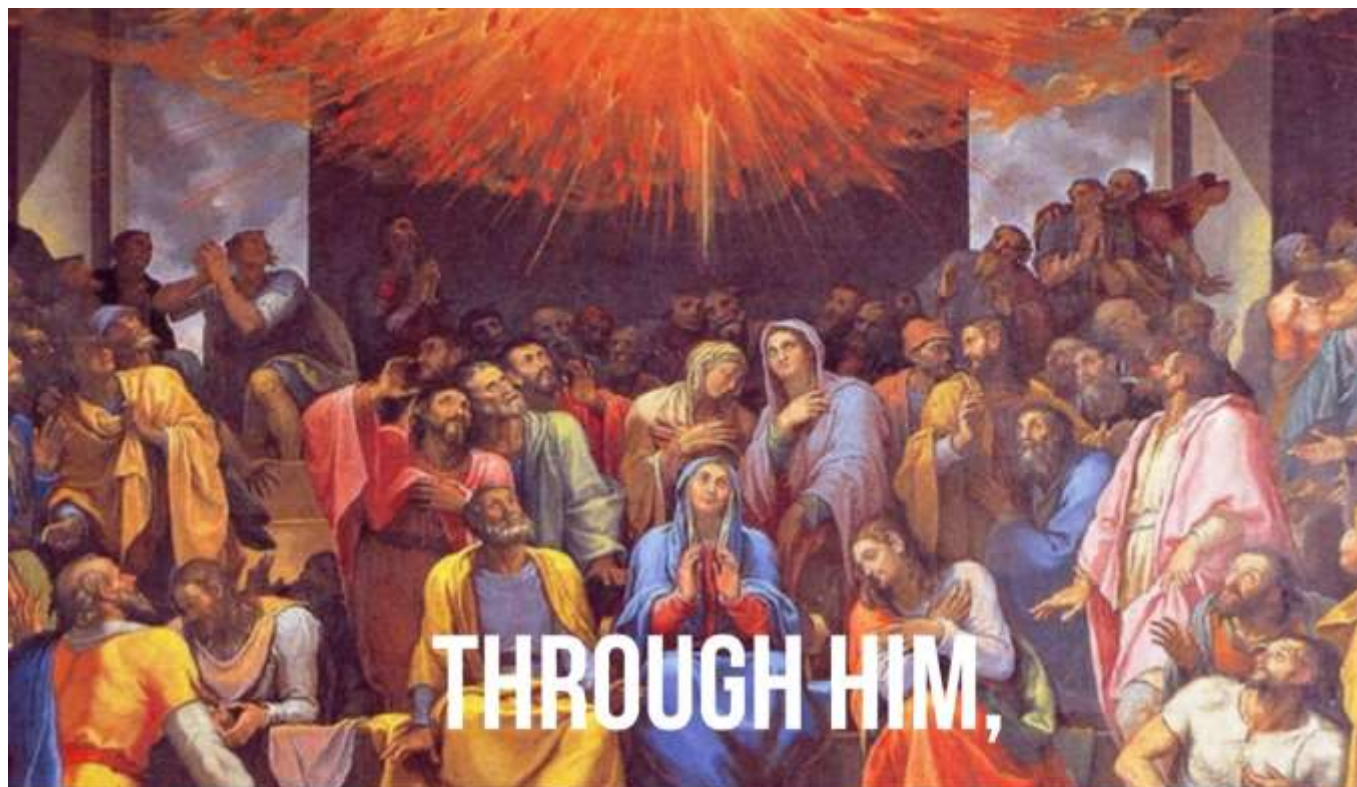
Teach us to discover the worth of each thing, to be filled with awe and contemplation.

To recognise that we are profoundly united with every creature as we journey towards your infinite light.

We thank you for being with us each day.

Encourage us, we pray, in our struggle for justice, love and peace.

by Pope Francis from his encyclical, Laudato Si'



**THROUGH HIM,
WITH HIM, IN HIM:
THE LIFE OF PRAYER**

20 MAY — 'LORD TEACH US TO PRAY' — ST ELPHIN'S, 6.30PM

**23 MAY — 'HALLOWED BE THY NAME': DAILY PRAYER — SMILE CENTRE,
7 PM**

**30 MAY — 'FORGIVE US OUR TRESPASSES': THE JESUS PRAYER —
SMILE CENTRE, 7 PM**

**6 JUNE — 'RANSOMED, HEALED, RESTORED, FORGIVEN': PRAYER AND
HEALING — SMILE CENTRE, 7PM**

**14 JUNE - 'FOR THINE IS THE KINGDOM, THE POWER AND THE GLORY':
THE WORK OF THE HOLY SPIRIT — SMILE CENTRE, 7 PM**

**26 JUNE — 'FOR EVER AND EVER. AMEN': THE NEXT STEPS IN
DISCIPLESHIP — SMILE CENTRE, 7 PM.**

Readers and Prayer Rota for June and July

	<u>8.30am</u> Reader	<u>10.30am</u> Prayers	<u>10.30am</u> Reader	<u>6.30pm</u> Reader
June				
3 rd	Sue J	All Age	Service	GW / DR
10 th	Kathryn H	Thelma W	James T	Cluster Service
17 th	Sue B	Fr Cunningham	The Mayor	AW / SW
24 th	Sue J	Ann Dunn	James M	Barbara E
July				
1 st	Sue B	All Age	Service	GW / DR
8 th	Sue J	Gill W	Joanne M	Barbara E
15 th	Kathryn H	Janet C	Jonathan M	GW / DR
22 nd	Sue J	Ann Dunn	Jan N	AW / SW
29 th	Sue B	Thelma W	Margaret G	GW / DR

Communicants and Collections

Week ending	Communicants	Collections
April 22 nd	91	703.20
April 29 th	82	651.90
May 6 th	80	708.75
May 13 th	115	706.80

Donations:

Fabric Fund

In memory of Bill Richardson June 13 th , love from June and family	30.00
Cherished memories of Sydney Daniels, 10 th June, 2014, a much loved and dearly missed Husband, Dad and Grandad	50.00
In memory of Harold Yates from Ray and Gill Whitticombe	10.00
In memory of Lilian Jones from Janet Cliffe	5.00

General Fund

In memory of Dad – George Barrett on Fathers Day from Wendy and Paul	10.00
--	-------

Parish Registers

Holy Baptism in May

6th May

Arthur Sinclair

Maia Rose Manclark

Charlotte Mae Willington

Darcy Amanda Rose Liptrot

20th May

Michael James Leigh

Willow Amor Litherland

George James Dixon Ford

Violet Dorothy Meachin

Ariella Mary Middleton



Holy Matrimony in May

26th Thomas Griffiths and Victoria Allcock



Christian Burial & Cremation in May

8 th	Harry Hickman	Age 78
15 th	Samuel (Sammy) Roberts	Age 10
16 th	Dorothy Calderbank	Age 81
18 th	Terence David Wood	Age 65
21 st	Daniel O'Neill	Age 38
23 rd	Jamie Glyn Delooze	Age 29
23 rd	William Ernest Picken	Age 83



Lest we Forget - June & July 1918

6 th June	Private John Hazlehurst MM	Age 21
22 nd July	Lance Corporal John Harrop	Age unknown
28 th July	Private John Atherton	Age 43

They shall grow not old, as we that are left grow old:
Age shall not weary them, nor the years condemn.
At the going down of the sun and in the morning,
We will remember them.



Social and Group Activities

Tuesday

7.30pm St Elphin's Church Choir Practice in Church

Wednesday

6.45pm St John's Brownies – Scout HQ, Vale Owen Road

7.30pm St Elphin's Ladies Group (1st & 3rd only) meet in the St Elphin's Community Centre

7.30pm Mothers' Union – St Elphin's Community Centre (2nd only)

Thursday

5.15 – 6.15pm 9th Warrington Rainbows – St Elphins Community Centre

6.30pm St Elphin's Brownies – St Elphin's School

6.30pm St Elphin's Guides–St Elphin's Community Centre

7.30pm Men's Group (1st only)

Friday

6.30-7.30pm Beavers - (Boys/Girls aged 6 – 8)

6.30–8.00pm Cubs - (Boys/Girls aged 8 - 10)

6.45–9.00pm Scouts - (Boys/Girls aged 10 - 14)

At Howley Fairfield Neighbourhood Project, Fairfield Street. For more details contact Debbie (Group Scout Leader) on 07804 267310

All members of the Church and local community are welcome to come and join with us in these and any occasional activities which are announced in Church or advertised on the Church Notice Board.

School

St Elphin's (Fairfield) CE Primary School

Head Teacher:

Mrs Allison Bennett

 635143

Bookings:

made with the Head Teacher

St Elphin's Junior Church

Sundays at 10.30am in the Choir Vestry

Occasional Services

Holy Baptism

1st and 3rd Sundays in the month at 12.30pm

Arrangements to be made with the Rector or Church Wardens

Holy Matrimony and Banns

Arrangements to be made with the Rector or Church Wardens

Funerals

Arrangements are usually made with the Rector by the Funeral Director who has been engaged.

The Church Wardens hold a surgery in Church on Saturdays from 10.00am to 11.00am for Applications for Baptism, Holy Matrimony and Banns.

The Clergy are available at any time in cases of emergency.



Sure Health Chiropractic

Leading providers of medical care for all joint, muscle
and nerve problems

"David, I must say, having been in excruciating pain with my sciatica for over 4 weeks, could hardly walk and go about my daily business before I came to you and you fully restored me with just three appointments; that is fantastic! In my book you are a miracle worker, as I almost thought I had to go under the "knife" which I wanted to avoid like the plague and you helped me achieve this, thank you! It is a very good feeling to be pain free!

Regards from a very happy patient"

H. Endress

**General
Chiropractic
Council**



Contact us to see what we can do for you.



The College of
Chiropractors

Web: www.sure-health.co.uk

Email: info@sure-health.co.uk

Tel: 07988 631099

[Facebook.com/SureHealth](https://www.facebook.com/SureHealth)

99 Knutsford Road, Grappenhall, Warrington, WA4 2NS



Readers are encouraged to support our Sponsors
who have given generously towards our costs.



AB Electrical Plumbing and Property Maintenance

All trades covered Commercial & Domestic

Plastering, Plumbing, Hard & Soft Landscaping,

General Garden Upkeeping,

Painting, Roofing,

Pointing, General Building Maintenance,

Wall & Floor Tiling

Any odd jobs

over 20 year's experience

Tel 07960 862315 Tony Blakeman

For that Special Occasion

The Winmarleigh Rooms

Large and small licensed Function Rooms available for:

Wedding Receptions, Christenings, Birthdays etc

For further information and bookings please contact:

The Winmarleigh Rooms

Winmarleigh Street

Warrington



01925 651468

Email: enquiry@winmarleighrooms.co.uk



We clean your oven.....
so you don't have to.

Call today to have your
oven, hob, extractor or
Aga professionally cleaned

Steve Webster

contact details:

Tel 01925 816748, Mob tel. 07988 594770

www.ovenwizards.com



Knox & Son Ltd

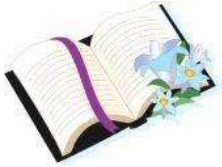
Independent Family Funeral Directors

- 24 Hour Personal Care • Private Chapels of Rest
- Pre-Paid Funeral Plans • Horse Drawn Hearse Available
- Religious and Non Religious Ceremonies

43-45 Orford Road, Warrington



01925 633388



Shelley's

Restaurant & Coffee Shop

8 Bold Street, Warrington



01925 654000



CO-OP
FUNERAL
PLANNING
AUTHORITY
REGISTERED

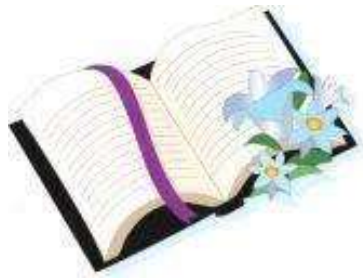
co-operative

funerals

Bewsey Road, Warrington, WA2 7LW



01925 445555




Cheshire Funeral Services

Park View Funeral Home
57 Gorsey Lane, Warrington

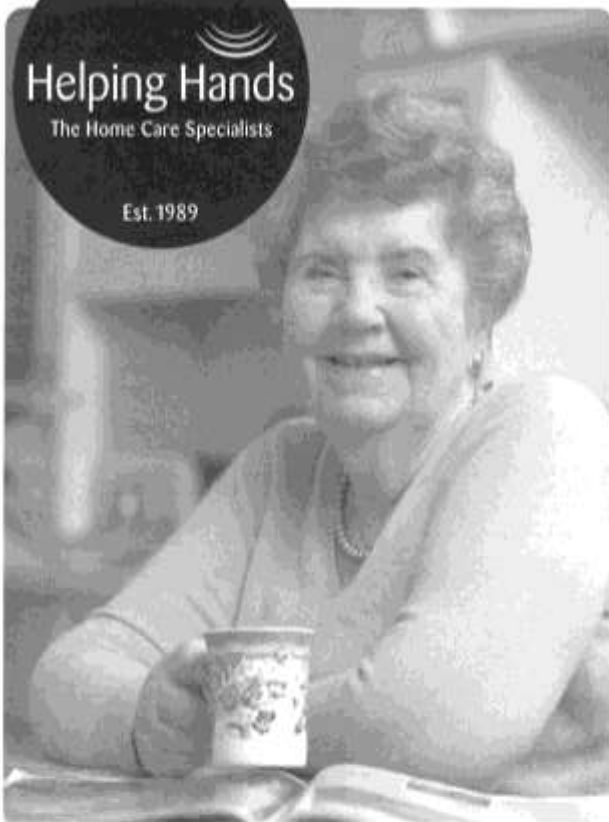
 **01925 571048**

'Caring for our Community'


Helping Hands

The Home Care Specialists

Est. 1989



Do you need a Helping Hand?

RECRUITING
CARERS
NOW!

If you are looking for an **alternative to residential care** or extra support for those everyday tasks that are becoming difficult for you or a loved one – **then we're here to help - from 30 minutes per week to Live-in Care.**

Our **Warrington care team** has been providing award winning quality homecare since 1989 and can help with: personal care, housekeeping, help getting around or even to provide a break to an existing family member or care-giver.

To find out how we can help you,
call: **01925 541 819** or
visit: www.helpinghands.co.uk



Readers are encouraged to support our Sponsors who have given generously towards our costs.



**Thursday's 9.30,11.30am
5.30,7.30pm**

Friday's 9.30,11.30am

**The Grange social club
Grange Avenue
WA41QH**

Tel Mike 07867531764

slimmingworld.co.uk
0344 897 8000



Hospice Shops



Birchwood	01925 825561
Bridge Foot (Ft)	01925 650800
Golden Square	01925 575780
Hood Manor	01925 629494
Latchford Village	01925 415414
Longford Street, Warrington	01925 411626
Lymm	01925 758057
Stockton Heath	01925 602932

Readers are encouraged to support our Sponsors
who have given generously towards our costs.